

FAIRMONT



Bianco Carrara & Grigio Bardiglio | 10"x10"



Nero Marquina & Bianco Carrara | 10"x10"

Made in **ITALY**



Wayne Tile Company

www.waynetile.com

FAIRMONT

PORCELAIN TILE

TECHNICAL DATA

Thickness	9 mm
Application	Interior/Exterior
Frost Resistance	Yes
Rectified	Yes
Slip Resistance	R10
Shade Variation	V1
Water Absorption	≤0.5%



Nero Marquina & Verde Guatemala | 2.5"x10"

COLORS

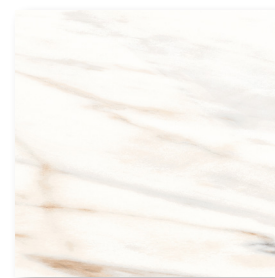
Bianco Carrara



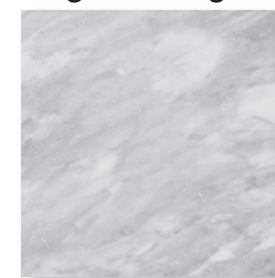
Botticino Classico



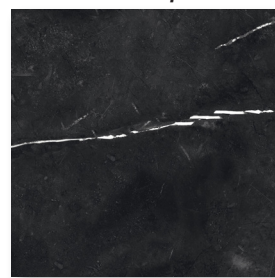
Calacatta



Grigio Bardiglio



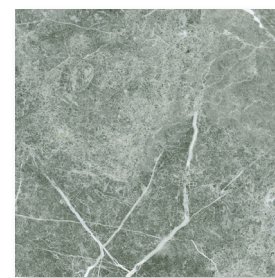
Nero Marquina



Pulpis Bronze



Verde Guatemala



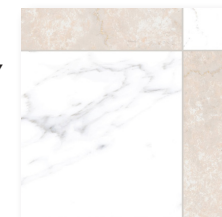
WOVEN PATTERN DETAILS



10"x10" = 64%
2.5"x10" = 32%
2.5"x2.5" = 4%

1 Module would consist of:

1 - 10"x10"
2 - 2.5"x10"
1 - 2.5"x2.5"



LEAD TIME

In Stock/Quick Ship

SIZES

2.5"x10"

10"x10"



2.5"x2.5" Tozzetto



Wayne Tile
Company

PACKING INFORMATION

Size	Finish	Thickness	SF per Box	SF per Pallet	Pieces per Box
2.5"x10"	Matte	9 mm	8.072933	678.126	50
10"x10"	Matte	9 mm	13.45489	726.564	20
2.5"x2.5" Tozzetto	Matte	9 mm	0.77500155	369.74032	20